



GROUP EVENTS AT OWA

OWA Parks & Resort is one destination for every kind of group event. From intimate small groups to accomplishing corporate goals on a big scale, we have you covered.



1501 S. OWA Blvd.
Foley, Alabama 36535
(251) 923-3490
VisitOWA.com



LOCATION, LOCATION, LOCATION!

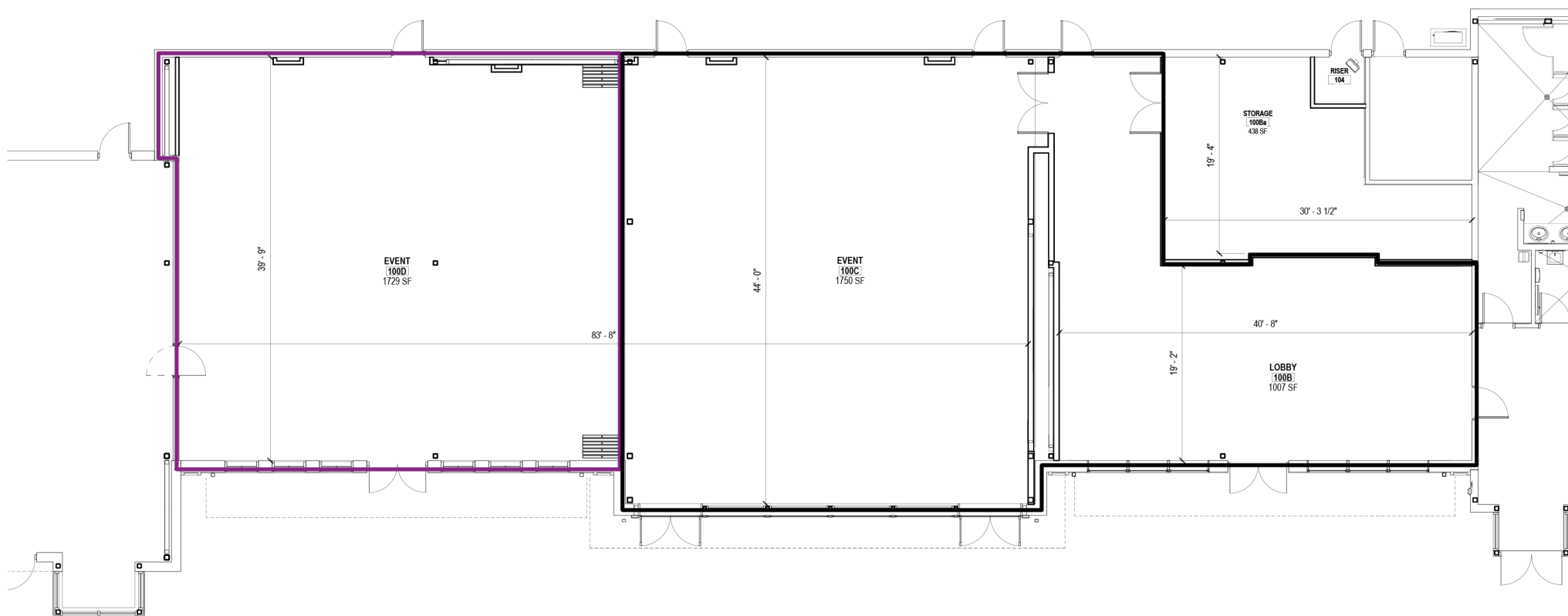
The Bohemian in Downtown OWA offers location, flexibility & atmosphere— ideal for business retreats, parties/celebrations, fund-raising events, and more. The Bohemian Room commands a prime spot, just steps from everything OWA Parks & Resort has to offer, in a memorable, comfortable, and state-of-the-art space.





SPACES AND AMENITIES

The Orange Room offers 1729 square feet and its own entrance (does not include lobby; ideal for smaller events). The Main Hall features 3479 square feet in addition to the spacious lobby/ pre-event space (ideal for larger events). Rates begin at \$85/hour for the Orange Room and \$150/hour for the Main Hall. Exact rates are based on date and length of event and include tables and chairs (upon request); hourly rates do not include add-ons or \$150 administrative fee.





FOOD AND BEVERAGE

CORPORATE MENU PACKAGES

Corporate meal packs are perfect for a quick lunch to give your event attendees a personalized self-contained option. Meal pack options start at \$9.99 each with a ten (10) meal minimum. We proudly serve vegetarian and vegan options.

SPECIAL OCCASION MENU OPTIONS

From weddings to Mardi Gras balls and everything in between, The Bohemian offers everything you need and more for your special occasion. Our chefs work with each party for a custom menu suited for you and your guests. Contact us for more information.

SPIRITS

Add beer and wine to your event or jazz things up with a bartender offering specialty drink options. At The Bohemian we can pair the perfect beverage options to your special event.



ADD-ONS (INCLUDED UPON REQUEST)

Banquet Chairs (Black)

Banquet Tables

60" Round Tables

72" Round Tables

Please inquire for current quantity available.

Half Podium

Table top unit. No mic, no light. Portable. Indoor use only.

Motorized Projector

78"H x 139"W - Located inside Main Hall. Not portable.

70" TV Projector

82"

Located inside Orange Room. Not portable.

Easel Stand

One (1) / Indoor use only.

Stanchions

Gold posts with black velvet ropes.

Sign Holder

8.5 x 11 sheet for verbiage.

Microphone with Speakers

Bluetooth capable.





ADD-ONS (AVAILABLE TO RENT)

Tablecloths (each) \$10.00

Stage with Lights \$250.00

12" high stage. 4'x4' modular square decks.

Max size = 16' x 24'.

Dance Floor (Black) \$100.00

3'x3' modular dance floor. Max size 18' x 18'.

Dance Floor (Cream) \$100.00

3'x3' modular dance floor. Max size 18' x 18'.

Full Podium with Microphone \$25.00

Mic and light connected to the stand.

Portable. Indoor use only.

GOBO Projector \$20.00

Initials or design projected on black dance floor.

Main Hall rental only. Design or concept must be provided by renter three (3) weeks prior to event.





COUNTLESS ENTERTAINMENT OPTIONS

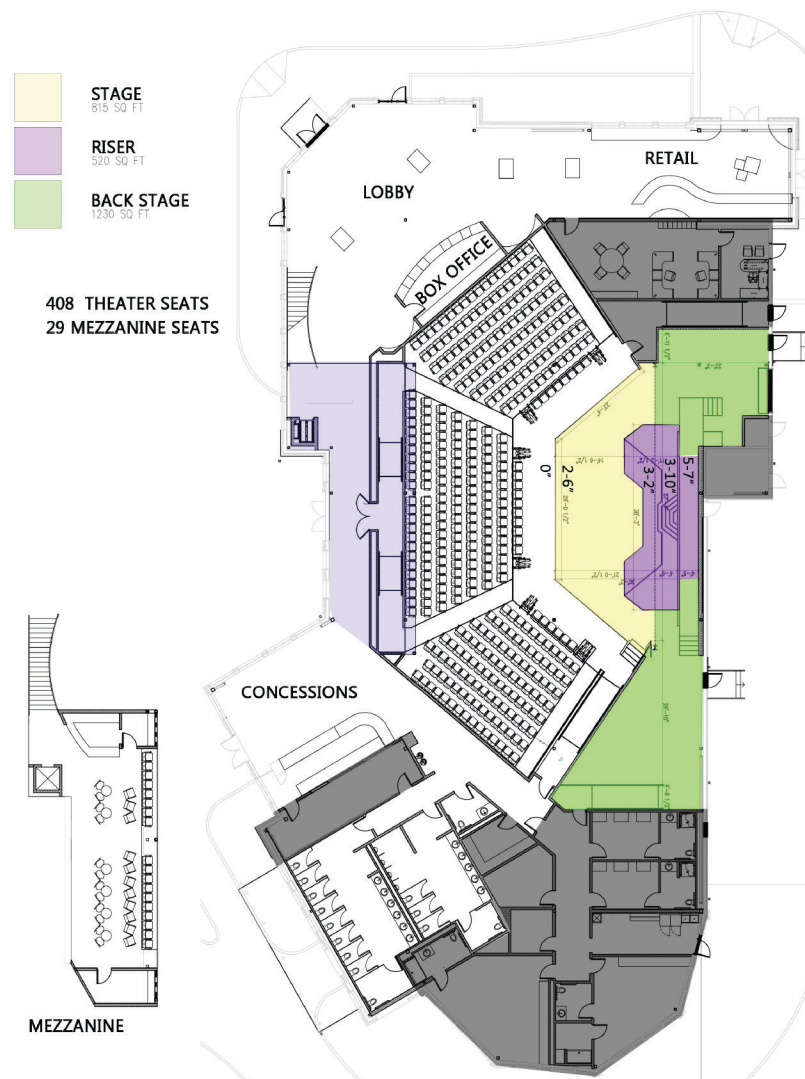
The centerpiece of Downtown OWA, OWA Theater is ideal for corporate parties, business seminars, choir and live performances, award ceremonies, and even weddings. This space can accommodate groups of any size and is ready to welcome its guests.



OWA THEATER

FEATURES & AMENITIES

- OWA Theater has a seating capacity of 402 seats and 6 wheelchair accessible spaces ensuring there is not a bad seat in the house.
- The concession area offers a wide variety of snacks complete with an appetizer catering menu available, as well as a specialized alcoholic and non-alcoholic drink menu.
- The mezzanine is the perfect place to host a party for you and your closet friends, an after hours business gathering, or a small family get together. The Mezzanine has a private cash bar to cater to your guests making it the perfect location for your special event. Please inquire about capacity.
- Marquee signage placement for the event.
- Digital poster in ticket office.
- Mobile bar that can be used for group gatherings.
- Online ticketing through our Audience View technology service.
- Box Office staffing throughout the entire ticketing sales process.
- Ticketing sales reports to track your progress.
- House management and ushering staff for your show.
- Lockable dressing room(s) during tech rehearsals and shows.
- Scheduled announcements via official OWA website and social media outlets.
- Adjustable pricing to event specifications.
- Assisted listening devices.
- Lobby available for event rental and pre-show gatherings.





FEATURES & AMENITIES

OWA Theater's concessions area has a variety of different food and drink options. Choose a classic theater meal, like popcorn or nachos, or enjoy a special alcoholic beverage to get your night started. Plus, the concessions area has access to an outside patio area with tables and chairs for additional space if needed for any kind of event. Other perks are available! If you're interested, just inquire with our Theater Team for more information.

- Wide variety of snacks
- Appetizer catering menus
- Specialized alcoholic drinks
- Non-alcoholic drink menu





TROPIC FALLS BIRTHDAY PARTIES

Planning a birthday party has never been easier. Just choose an all-inclusive package, call our hotline to select your date, bring your cake & leave the rest to us! We'll have your reserved space ready at the time you request and deliver delicious pizza along with drinks to help fuel the fun!





THEME PARK PACKAGE (STARTING AT \$450 + TAXES/FEES)

- All-day Tropic Falls Theme Park admission for up to 10 guests, plus a complimentary ticket for the birthday person (*Admission into the Waterpark is not included in this ticket*)
 - Non-ticketed guests will not have access to the parks, all guests attending the party MUST purchase a ticket
 - Children 3 years and under are free (parent or guardian must purchase a ticket to enter with the child)
- Event area for a 2 hours reserved time outside Baja Grill pavilion in the theme park (*Limit 24 guests max in space*)
 - The reserved time frame is firm, please do not arrive late.
*This time is strictly enforced as we must clean the room entirely before and after each party.
- The birthday package also includes:
 - 3 large pizzas
 - Choice of (3) 2 liters of Lemonade, Coke, Sprite or Water
 - Plates
 - Cups
 - Napkins
 - Utensils





THEME PARK PACKAGE ADD-ONS

- You may only add up to 13 additional riding tickets that can currently be added at the rate of \$19.99 + taxes and fees (\$22.39) per ticket. *(Price is subject to change at any time)*
- Additional large pizzas \$15.99 each
- Additional 2 liters \$4.99 each
- OWA Souvenir drink Mug for \$9.99 + taxes and fees *(Minimum purchase of 10)*
- Free refills *(Inside Tropic Falls – day of the visit)*

All add-ons must be purchased 5 days in advance to receive the discounted rates above, day of purchases will not qualify for discounts.

You may bring your own themed tablecloths, paper goods, and balloons paired in a bunch if you wish. Balloon arches/backdrops and large décor are not permitted. The decor must be tabletop, you cannot hang/tape or pin anything on the walls. Noise makers of any kind are not permitted.





WATERPARK PACKAGE (STARTING AT \$675 + TAXES/FEES)

- All-day Tropic Falls Theme Park and Waterpark admission for up to 10 guests, plus a complimentary ticket for the birthday person. *(All guest entering the waterpark are required to have a ticket)*
 - Non-ticketed guests will not have access to the parks, all guests attending the party MUST purchase a ticket
 - Children 3 years and under are free (parent or guardian must purchase a ticket to enter with the child)
- You have 2 hours in the party room inside the waterpark. Your reserved space will seat up to 24 guests. The reserved time frame is firm, please do not arrive late.
 - *This time is strictly enforced as we must clean the room entirely before and after each party.
- The birthday package also includes:
 - 3 large pizzas
 - Choice of (3) 2 liters of Lemonade, Coke, Sprite or Water
 - Plates
 - Cups
 - Napkins
 - Utensils





WATERPARK PACKAGE ADD-ONS

- You may only add up to 13 additional riding tickets that can currently be added at the rate of \$36.99 + taxes and fees (\$41.43) per ticket. (*Price is subject to change at any time*).
- Additional large pizzas \$15.99 each
- Additional 2 liters \$4.99 each
- OWA Souvenir drink Mug for \$9.99 + taxes and fees (*Minimum purchase of 10*)
- Free refills (*Inside Tropic Falls – day of the visit*)

All add-ons must be purchased 5 days in advance to receive the discounted rates above, day of purchases will not qualify for discounts.

You may bring your own themed tablecloths, paper goods, and balloons paired in a bunch if you wish. Balloon arches/backdrops and large décor are not permitted. The decor must be tabletop, you cannot hang/tape or pin anything on the walls. Noise makers of any kind are not permitted.



EDUCATION IN MOTION

EXPLORE THE PHYSICS OF FUN

Education In Motion presents a STEM-based field trip that seamlessly blends education with excitement, promising a day of unparalleled learning.



EDUCATION IN MOTION

From K-12, students will immerse themselves in the world of gravity, centripetal motion, inertia, potential and kinetic energy, as well as the intriguing distinctions between negative and positive G-forces. Delve into the realm of animatronics in our indoor dark ride, Mystic Mansion, where the science behind the magic is unveiled.

Whether your students are homeschooled, attend private school, or engage in virtual learning, all school-aged children are enthusiastically welcomed!

Limited spots are available, so seize the opportunity and reserve your spot today! Ask about our affordable meal plans and refillable drink bottles! Please note that Education in Motion requires a minimum of 15 guests per group, and all attendees must purchase a ticket for admission.

See website for specific dates & forms



DRIVING DIRECTIONS FROM GULF SHORES & ORANGE BEACH

- **Take the Foley Beach Express North** from Gulf Shores and Orange Beach
- **OWA** is located at the northwest corner of the Foley Beach Express and County Road 20

DRIVING DIRECTIONS FROM I-10 SOUTH

- **Take Exit 49** Baldwin Beach Express Southbound
- **OWA** is located at the northwest corner of the Foley Beach Express and County Road 20

DRIVING DIRECTIONS FROM I-65 SOUTH

- **Take Exit 34** Highway 59 to North Foley
- **Continue Southbound** on the Foley Beach Express and County Road 20
- **OWA** is located at the northwest corner of the Foley Beach Express and County Road 20




**CONNECT TO
OUR FREE WIFI!**

OFFICIAL SPONSORS



FREE PARKING

FOLEY, AL | 7 MILES FROM THE BEACH | VISITOWA.COM | 251.923.2111 |    